

SERVICE PARTS

4-Pin Amp Plastic Connectors



- | | | |
|--|--|---|
| #048 283 Kit (consists of)
#081 905 Receptacle
#079 535 Pins (Qty 5) | #048 284 Kit (consists of)
#081 906 Connector
#079 534 Sockets (Qty 5) | #046 958 Kit (consists of)
#046 080 Connector
#079 535 Pins (Qty 5) |
|--|--|---|

Note: Strain relief clamp #079 531 needs to be ordered separately with cord-mounted connections



- | | | |
|---|---|--|
| #048 282 Kit (consists of)
#081 560 Receptacle
#079 534 Sockets (Qty 5) | #079 878 Kit (consists of)
#079 532 Connector
#079 535 Pins (Qty 5) | #080 328 Kit (consists of)
#079 533 Connector
#079 534 Sockets (Qty 5) |
|---|---|--|

Note: Strain relief clamp #079 531 needs to be ordered separately with cord-mounted connections

4-Pin Amphenol Metal Connectors



Note: Pins are the solderable type and are pre-inserted into the receptacle
Strain relief clamp #039 828 needs to be ordered separately w/cord-mounted connections

5-Pin Amphenol Metal Connectors



Note: Pins are the solderable type and are pre-inserted into the receptacle
Strain relief clamp #039 685 needs to be ordered separately w/cord-mounted connections

6-Pin Amphenol Metal Connectors



Note: Pins are the solderable type and are pre-inserted into the receptacle
Strain relief clamp #039 828 needs to be ordered separately w/cord-mounted connections



Note: For Maxstar 140 and 150's.

9-Pin Amp Plastic Connectors



- | | | |
|--|---|--|
| #170 646 Receptacle (N/A)
#079 535 Pins (Qty 5) | #048 380 Kit (consists of)
#079 705 Connector
#079 534 Sockets (Qty 10) | #048 306 Kit (consists of)
#079 707 Connector
#079 535 Pins (Qty 10) |
|--|---|--|

Note: Strain relief clamp #079 706 needs to be ordered separately with cord-mounted connections

10-Pin Amphenol Metal Connectors



Note: Pins are the solderable type and are pre-inserted into the receptacle
Strain relief clamp #073 332 needs to be ordered separately w/cord-mounted connections



Note: Pins are the solderable type and are pre-inserted into the receptacle
Strain relief clamp #073 332 needs to be ordered separately w/cord-mounted connections

10-Pin Amp Plastic Connectors



- | | | |
|--|--|--|
| #221 777 Kit (consists of)
#189 238 Receptacle
#134 733 Sockets (Qty 10) | #217 292 Kit (consists of)
#190 294 Connector
#134 731 Pins (Qty 10)
#134 732 Pins (Qty 10)
#079 739 Clamp
#143 922 Clamp | #222 857 Kit (consists of)
#207 194 Connector
#079 534 Sockets (Qty 10)
#141 685 Sockets (Qty 10)
#079 739 Clamp
#143 922 Clamp |
|--|--|--|

11-Pin Amphenol Metal Connectors



Note: Pins are the solderable type and are pre-inserted into the receptacle
Strain relief clamp #039 734 needs to be ordered separately w/cord-mounted connections

14-Pin Amphenol Plastic Connectors (Size 20)



- | | | |
|--|--|---|
| #143 976 Kit (consists of)
#134 735 Receptacle
#079 534 Sockets (Qty 15) | #141 162 Kit (14-18 ga wire)
#134 734 Connector
#134 731 Pins (Qty 15)
#079 739 Clamp
#143 922 Clamp | #152 369 Kit (consists of)
#143 424 Connector
#079 534 Sockets (Qty 15)
#079 739 Clamp
#143 922 Clamp |
| #143 976 Kit (consists of)
#134 735 Receptacle
#079 534 Sockets (Qty 15) | #144 310 Kit (20-24 ga wire)
#134 734 Connector
#134 732 Pins (Qty 15)
#079 739 Clamp
#143 922 Clamp | #152 568 Kit (consists of)
#143 424 Connector
#141 685 Sockets (Qty 15)
#079 739 Clamp
#143 922 Clamp |

14-Pin Amphenol Plastic Connectors (Size 17)

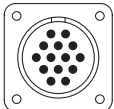


- | | | |
|--|--|---|
| #047 637 Kit (consists of)
#048 286 Receptacle
#079 534 Sockets (Qty 15) | #047 636 Kit (consists of)
#048 287 Connector
#079 535 Pins (Qty 15) | #071 892 Kit (consists of)
#045 349 Connector
#079 534 Sockets (Qty 15) |
|--|--|---|

Note: Strain relief clamp #079 739 needs to be ordered separately with cord-mounted connections

14-Pin Amphenol Metal Connectors

Panel-Mounted Male



#094 480 Receptacle

Cord-Mounted Female



#094 482 Connector
#039 734 Clamp
#116 964 Clamp

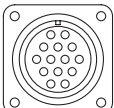
Cord-Mounted Male



#112 296 Kit (consists of)
#153 390 Connector
#039 734 Clamp
#116 964 Clamp

Note: Pins are the solderable type and are pre-inserted into the receptacle

Panel-Mounted Female



#086 022 Receptacle

Cord-Mounted Male



#136 961 Kit (consists of)
#094 481 Connector
#116 964 Clamp

Cord-Mounted Female

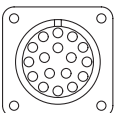


#136 960 Kit (consists of)
#137 301 Connector
#116 964 Clamp

Note: Pins are the solderable type and are pre-inserted into the receptacle

17-Pin Amphenol Metal Connectors

Panel-Mounted Female



#097 869 (N/A)

Cord-Mounted Male



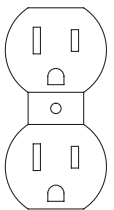
#097 866

*Note: Pins are the solderable type and are pre-inserted into the receptacle
Strain relief clamp #073 296 needs to be ordered separately w/cord-mounted connections*

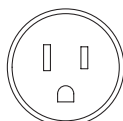
Connector Bodies, Plugs and Receptacles

15A, 125V Panel-Mounted Female

#604 176



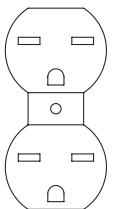
15A, 125V Cord-Mounted Male
#073 690



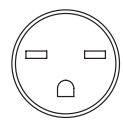
15A, 125V Cord-Mounted Female
#124 150

15A, 250V Panel-Mounted Female

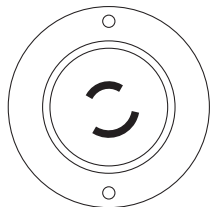
#604 103



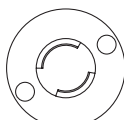
15A, 250V Cord-Mounted Male
#025 234



Cord-Mounted Female
#603 029 (N/A)



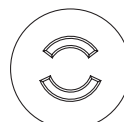
20A, 250V Panel-Mounted Male
#141 840



20A, 250V Cord-Mounted Female
#039 635



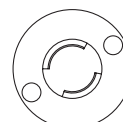
20A, 250V Cord-Mounted Male
#039 618



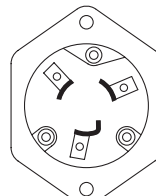
20A, 250V Panel-Mounted Female
#039 602



20A, 250V Cord-Mounted Male
#039 618



20A, 250V Cord-Mounted Female
#039 635



15A Panel-Mounted Male
#056 665



15A, 277V Cord-Mounted Male
#039 687



15A, 277V Cord-Mounted Female
#056 442



15A, 277V Panel-Mounted Female
#039 686



15A, 250V Cord-Mounted Male
#035 494



Cord-Mounted Female
#035 492 (N/A)



15A, 125V Panel-Mounted Female
#035 493 (N/A)



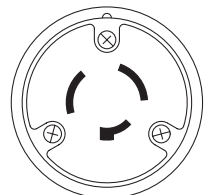
15A, 125V Cord-Mounted Male
#032 898



Cord-Mounted Female
#035 243 (N/A)



15A, 125V Panel-Mounted Female
#032 897



20A, 125V Cord-Mounted Male
#605 797



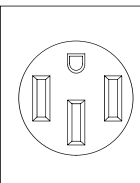
20A, 125V Cord-Mounted Female
#080 280



20A, 250V Panel-Mounted Female
#039 607



50A, 125/250V Cord-Mounted Male
#119 172



50A, 125/250V Panel-Mounted Female
#182 954
#164 704